

Robust and powerful

Outstanding driving stability



## EJE 220/225/230/235

Electric pedestrian pallet truck (2,000/2,500/3,000/3,500 kg)

The EJE Series 2 pallet trucks are extremely powerful. They are ideal for use when maximum throughput is required: During the loading and offloading of HGVs over ramps; in hard continuous operations with heavy loads; in 2-shift or even 3-shift operations. And also under harsh operating conditions.

The EJE also impresses with its advantages:

- Powerful, innovative 1.6 kW 3-phase AC drive motor for maximum throughput.
- High residual capacity and powerful lift motor.
- Extremely durable frame for exceptionally high operational demands.
- State-of-the-art control electronics ensure perfect handling.
- Low operating costs due to excellent energy management.
- Large batteries for long operating times.

There are also ergonomic advantages: Safe working due to

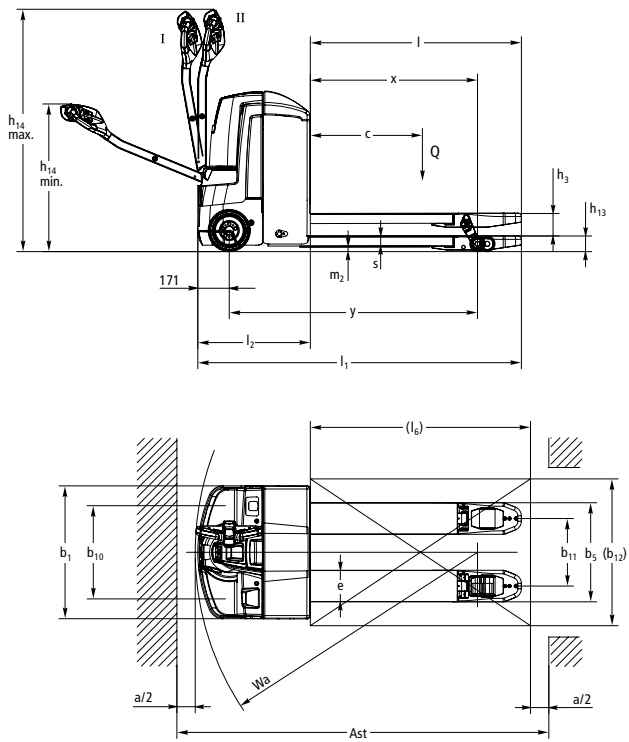
long, low-mounted tiller. This maintains the necessary distance between the operator and the truck. In confined areas, the crawl speed button reduces the speed for safe travelling with the tiller upright.

The EJE can be equipped with batteries up to 375 Ah. In combination with state-of-the-art and economical 3-phase AC technology, longer operating times are achieved. Multi-shift operation up to 24 hours is easily achievable with the optional lateral battery exchange.

The redesigned multi-functional tiller arm is full of innovations: Sealed sensor system (IP 65) for maximum breakdown protection, rocker switches with contactless electronics for precise operation in any tiller position and ergonomically arranged switches.

 **JUNGHEINRICH**

# EJE 220/225/230/235



I = Normal travel position; II = Crawl speed travel position



# Technical data in line with VDI 2198

			Jungheinrich						
			EJE 220	EJE 225	EJE 230	EJE 235			
<b>Identification</b>	1.1	Manufacturer (abbreviation)							
	1.2	Model							
	1.3	Drive	Electric						
	1.4	Manual, pedestrian, stand-on, seated, order picker operation	pedestrian						
	1.5	Load capacity/rated load	Q	t	2	2.5	3	3.5	
	1.6	Load centre distance	c	mm	600				
	1.8	Load distance	x	mm	911 <sup>3)</sup>				
	1.9	Wheelbase	y	mm	1,353 <sup>3)</sup>	1,353 <sup>1)</sup>	1,353 <sup>3)</sup>	1,353 <sup>3)</sup>	
	<b>Weights</b>	2.1.1	Net weight incl. battery (see row 6.5)			kg	540	550	580
2.2		Axle loading, laden front/rear			kg	876 / 1,664	880 / 1,670	1,154 / 2,426	1,276 / 2,795
2.3		Axle loading, unladen front/rear			kg	423 / 117	501 / 123	457 / 123	460 / 130
<b>Wheels / frame</b>	3.1	Tyres			PU / VU				
	3.2	Tyre size, front			Ø 230 x 70				
	3.3	Tyre size, rear			mm	Ø 85 x 110	Ø 85 x 110	2x Ø 85 x 85	2x Ø 85 x 85
	3.4	Additional wheels (dimensions)			mm				
	3.5	Wheels, number front/rear (x = driven wheels)			1x +2				
	3.6	Tread width, front	b <sub>10</sub>	mm	508				
	3.7	Tread width, rear	b <sub>11</sub>	mm	368				
<b>Basic dimensions</b>	4.4	Lift			h <sub>3</sub>	mm			
	4.9	Height of tiller in drive position min. / max.			h <sub>14</sub>	mm			
	4.15	Height, lowered			h <sub>13</sub>	85	85	85	92
	4.19	Overall length			l <sub>1</sub>	mm			
	4.20	Length to face of forks			l <sub>2</sub>	613	613 / 685	613	613
	4.21	Overall width			b <sub>1</sub> /b <sub>2</sub>	mm			
	4.22	Fork dimensions			s/e/l	mm			
	4.25	Width across forks			b <sub>5</sub>	mm			
	4.32	Ground clearance, centre of wheelbase			m <sub>2</sub>	mm			
	4.33	Aisle width for pallets 1000 x 1200 crossways			Ast	1,977 <sup>2)</sup>	1,977 / 2,049 <sup>2)</sup>	1,977 <sup>2)</sup>	1,977 <sup>2)</sup>
4.34	Aisle width for pallets 800 x 1200 lengthways			Ast	2,027 <sup>1)</sup>	2,027 / 2,099 <sup>1)</sup>	2,027 <sup>1)</sup>	2,027 <sup>1)</sup>	
4.35	Turning radius			W <sub>a</sub>	mm				
<b>Performance data</b>	5.1	Travel speed, laden/unladen			km/h	6 / 6			
	5.2	Lift speed, laden/unladen			m/s	0.04 / 0.06	0.03 / 0.06	0.03 / 0.06	0.03 / 0.06
	5.3	Lowering speed, laden/unladen			m/s	0.05 / 0.05			
	5.8	Max. gradeability, laden/unladen			%	10 / 20	8 / 20	6 / 20	5 / 20
	5.10	Service brake			electric				
<b>Electrics</b>	6.1	Drive motor, output S2 60 min.			kW	1.6			
	6.2	Lift motor, output at S3 10%			kW	1.5			
	6.3	Battery as per DIN 43531/35/36 A, B, C, no			B				
	6.4	Battery voltage/nominal capacity K5			24 / 250				
	6.5	Battery weight			kg	220			
<b>Misc.</b>	8.1	Type of drive control			AC speedCONTROL				
	8.4	Sound pressure level at operator's ear as per EN 12053			dB (A)	70			

<sup>1)</sup> Diagonal as per VDI: + 204 mm

<sup>2)</sup> Diagonal as per VDI: + 366 mm

<sup>3)</sup> Load section lowered: + 55 mm

# Benefit from the advantages



Application in block warehouse



The EJE unloading an HGV



Ergonomic tiller arm

## Innovative 3-phase AC technology

Jungheinrich three-phase AC motors offer higher performance while simultaneously reducing running costs:

- High efficiency levels with excellent energy management.
- Strong acceleration even at maximum load.
- Rapid direction change.
- No carbon brushes – maintenance-free drive motor.
- 2-year warranty on the drive motor.

## Robust design also for the toughest applications

- 8 mm high-grade steel apron on the front of the frame.
- High residual capacities due to reinforced fork construction.
- Suspended drive transmission (only EJE 235) compensates for shocks under heavy load conditions.

## Optimum cornering

Sprung and cushioned support wheels – linked via the ProTraLink torsion bar – distribute equalising forces dependent on travel conditions i.e. evenly across all wheels during straight-line travel; concentrated on the outer support

wheel during cornering. ProTraLink also ensures minimum support wheel wear when approaching ramps at an angle. Thanks to level equalisation by means of a mechanical link, both support wheels are always at the same height. The lower support wheel does not touch. Therefore there is no damage.

## Work ergonomically

- Tiller arm optimally adapted to the ergonomic needs of the operator:
- Clear colour coding and buttons with wear-resistant icons ensure intuitive operation.
  - Grip position optimally adapted to the operator's hand posture.
  - Easy accessibility of the crawl speed button when travelling with vertical tiller.
  - Rocker switch for consistent operation in all tiller positions.
  - Contactless sensor system with IP 65 protection rating. Maximum protection against breakdown.

## Long operating times available with lead-acid battery

Battery capacities up to 375 Ah guarantee long operating times.

- Short version: 2 EPzS 180/250 Ah.
- Long version: 3 EPzS 375 Ah (only EJE 225).
- Built-in charger (24 V/30 A for wet cell batteries and maintenance-free batteries) for easy charging at any mains socket (optional).
- Multi-shift operations facilitated by lateral battery exchange (optional).

## Additional equipment

- Cold store version.
- Entry rollers.
- Load guard.
- Integrated weighing technology.

## Lithium-ion technology

- High degree of availability thanks to extremely short charging times.
- No battery exchange required.
- Cost savings due to longer service life and low maintenance compared with lead-acid batteries.
- No charging rooms and ventilation required as there is no build up of gas.
- Longer service life with 5-year Jungheinrich guarantee.

## Jungheinrich UK Ltd.

Head Office:  
Sherbourne House  
Sherbourne Drive  
Tilbrook  
Milton Keynes MK7 8HX  
Telephone 01908 363100  
Fax 01908 363180

info@jungheinrich.co.uk  
www.jungheinrich.co.uk

The German production facilities in Norderstedt, Moosburg and Landsberg are certified. **ISO 9001**  
**ISO 14001**

Jungheinrich fork lift trucks meet European safety requirements.



**JUNGHEINRICH**